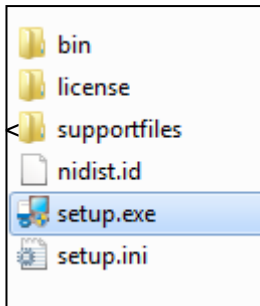


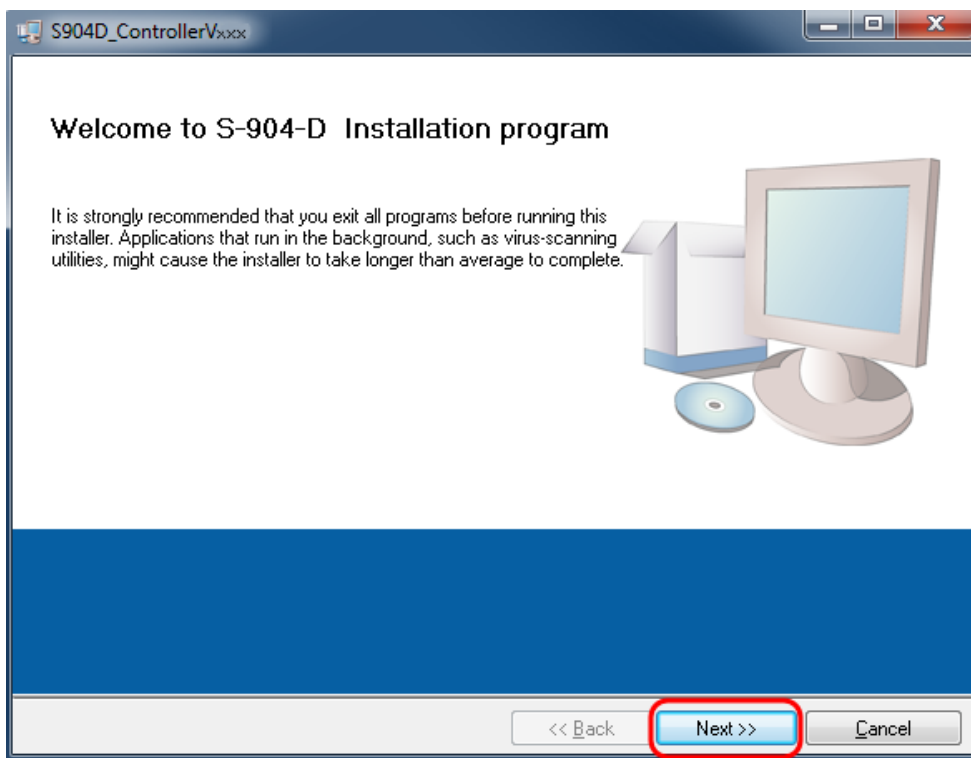
### Installing the S-904D controller software onto a Computer.

*The S-904D controller software is suitable for windows7, 8 and 10*

Go to the location of the received software.

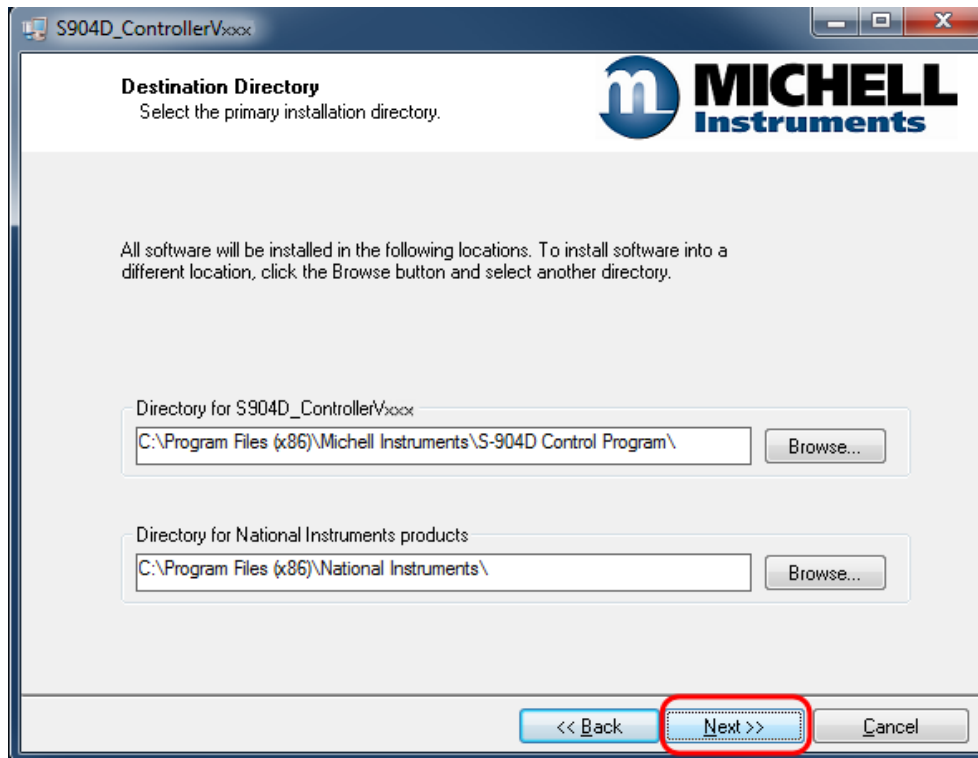


Start the installation of the software by double clicking on Setup.exe.

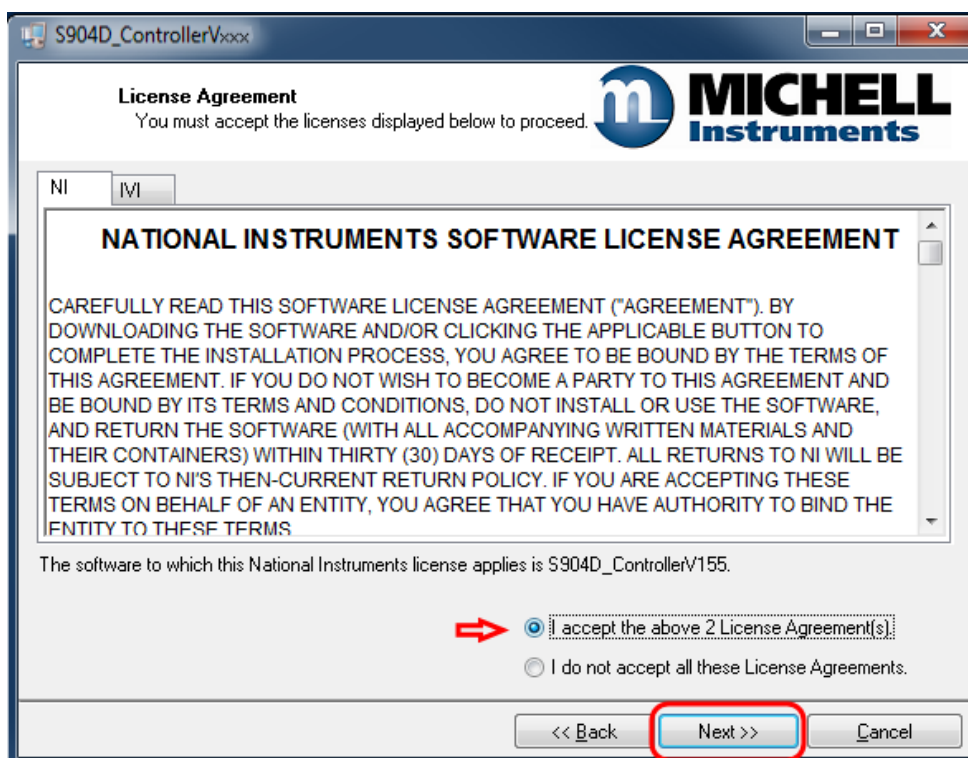


Press **Next**.

## S-904D Controller Installation Guide



Choose the directory where the S-904D program will be installed and press **Next**.

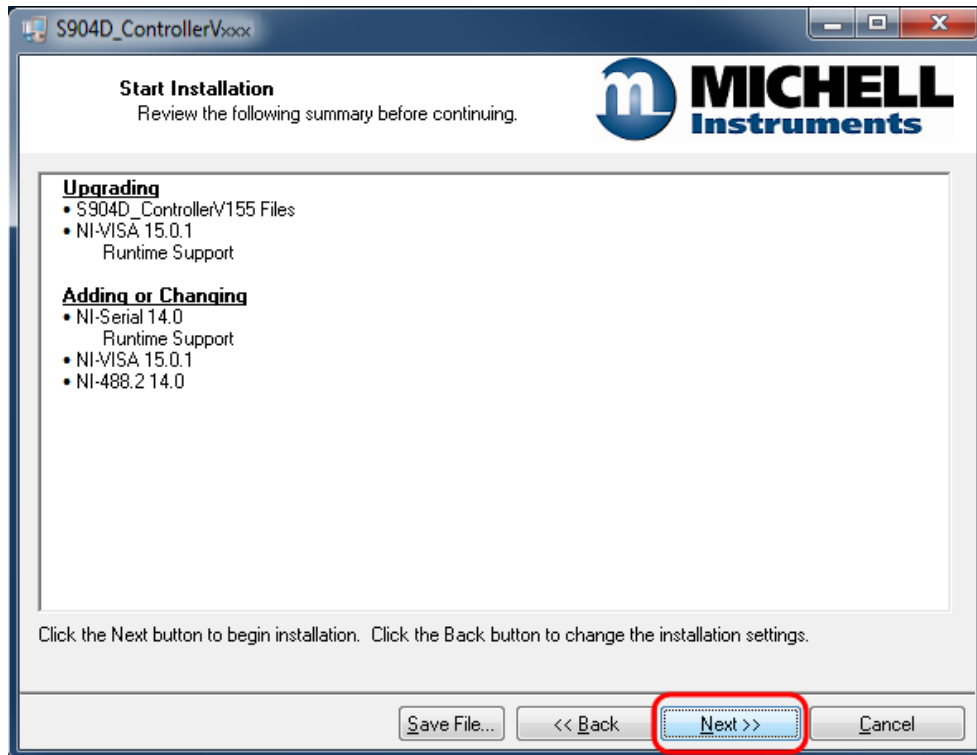


Accept the license terms and press **Next**.

# S-904D Controller Installation Guide

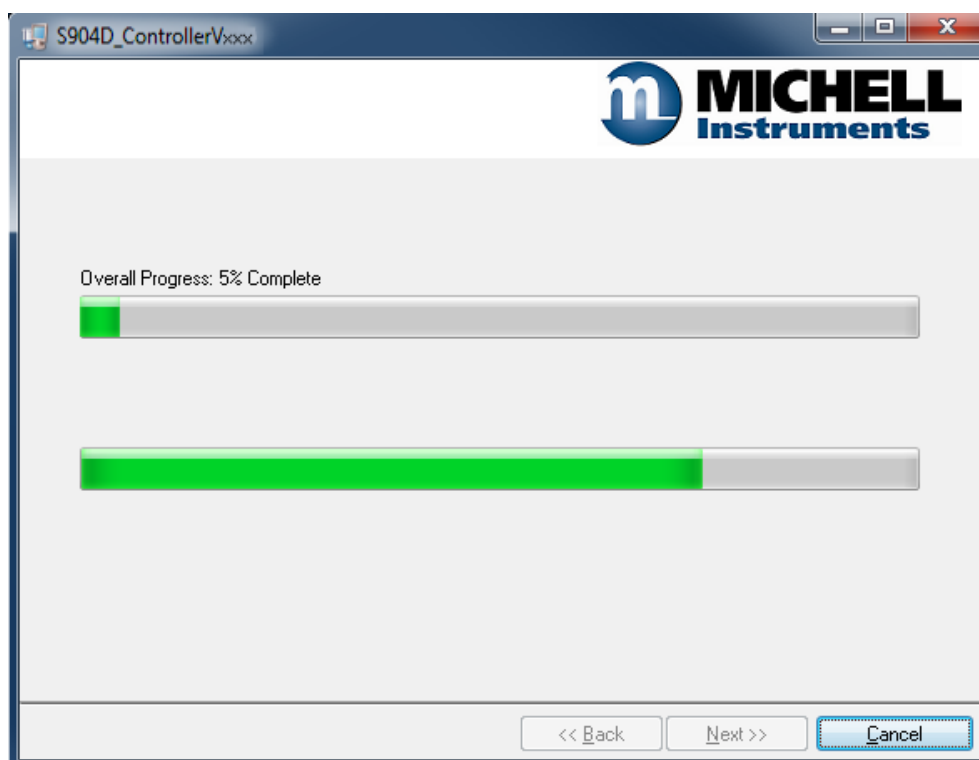
---

*Below view may be different, depending on the software already installed on your PC.*



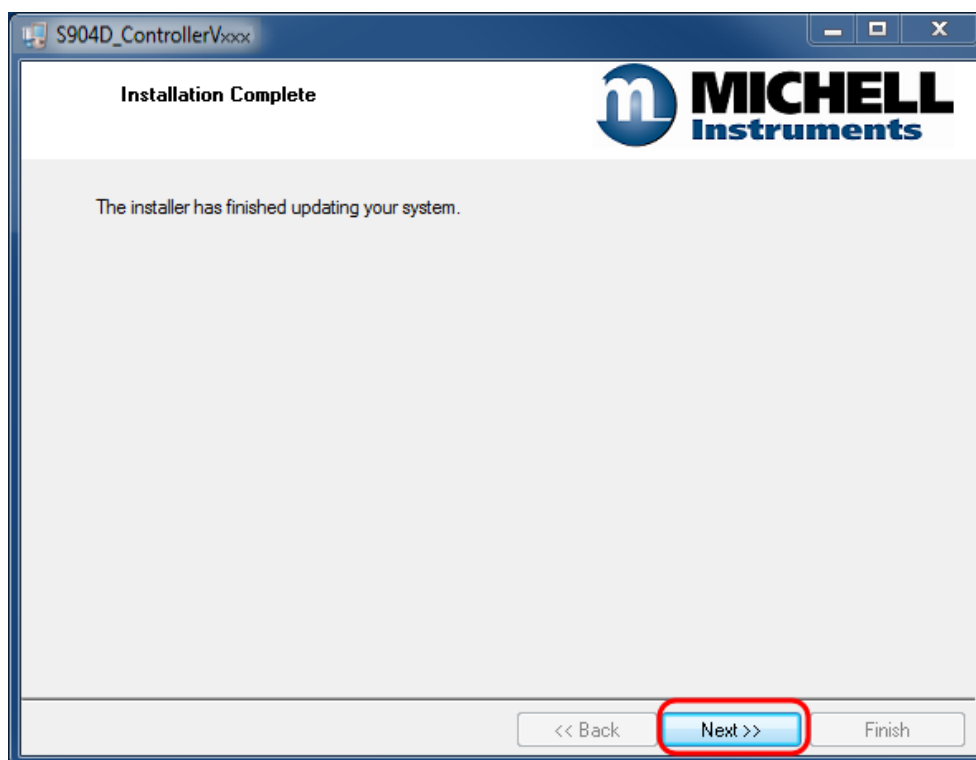
Press **Next** to continue.

The installation of the S-904D software will start now.

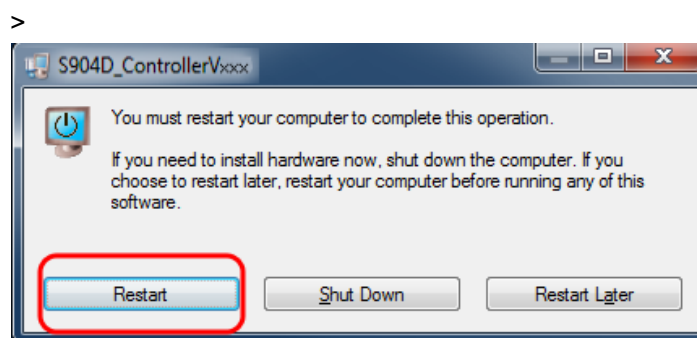


## S-904D Controller Installation Guide

---



Press **Next** to continue.



When the installation is complete, you must restart your computer, press **Restart**.

## Installing the CP210x USB to UART Driver.

The S-904D uses the CP210x to communicate with the PC.

**When the S-904D is connected to a computer through a USB cable for the first time Windows detect the CP210X and will automatically install the proper driver.**

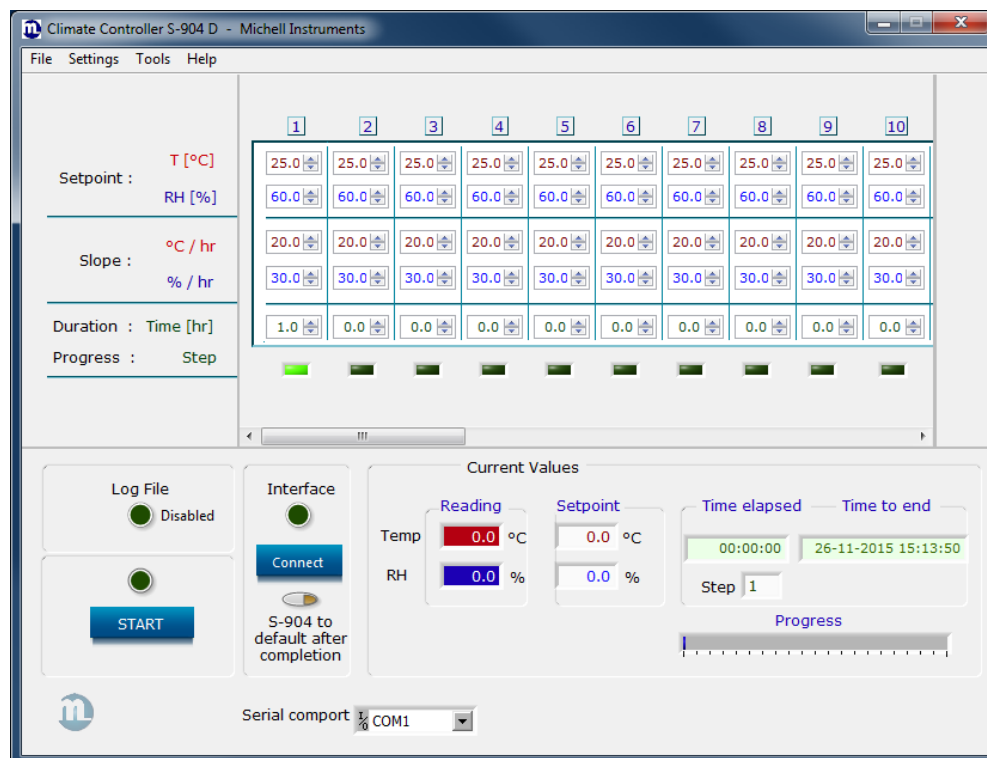
In case it doesn't happen you have to install the driver manually.

Follow the instructions below to install the CP210x USB to UART Bridge Driver

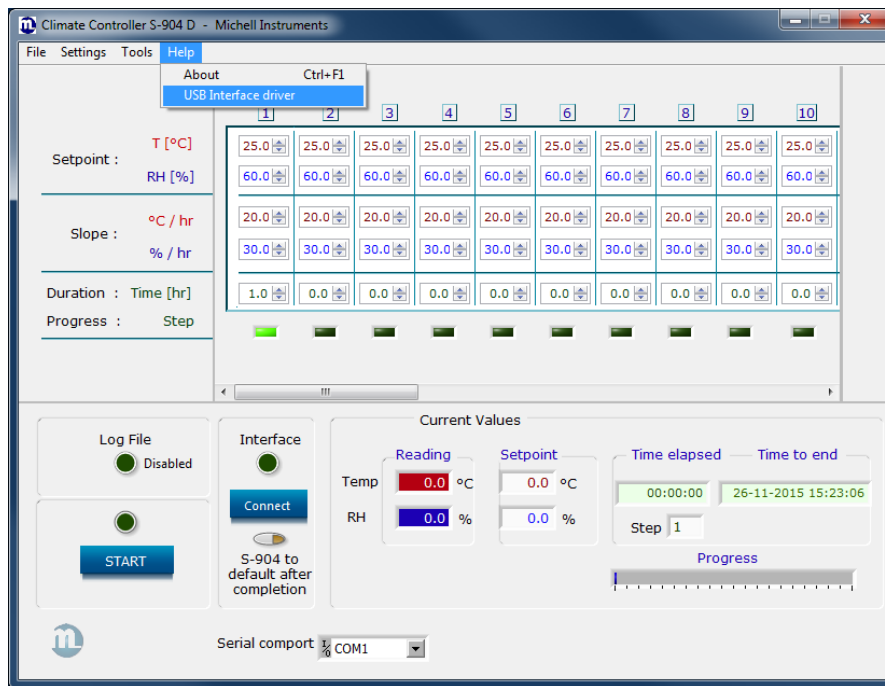
***Note: If RS232 is used, no additional drivers are needed.***

- Start the S-904D control software, by clicking on S904D Control.exe.

The program starts, showing the next screen:

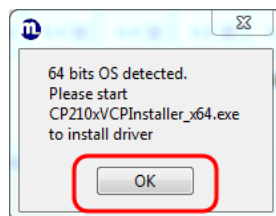


# S-904D Controller Installation Guide



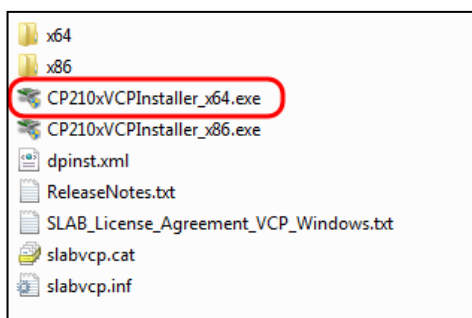
Click on **Help – USB Interface driver**.

The S904D control software detects if you are using a 32 or 64 bit operating system. A new window opens to tell you what driver to install.



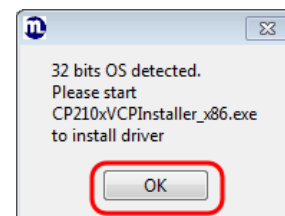
Press **OK**.

A second window opens.



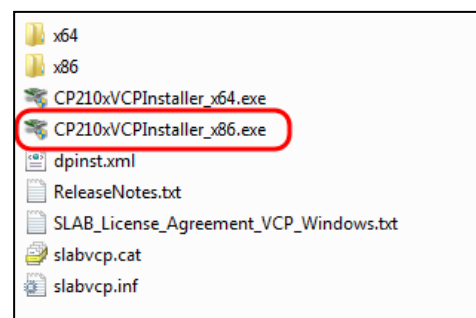
Double click on **CP210xVCPInstaller\_x64.exe**.

The driver installer starts.



Press **OK**.

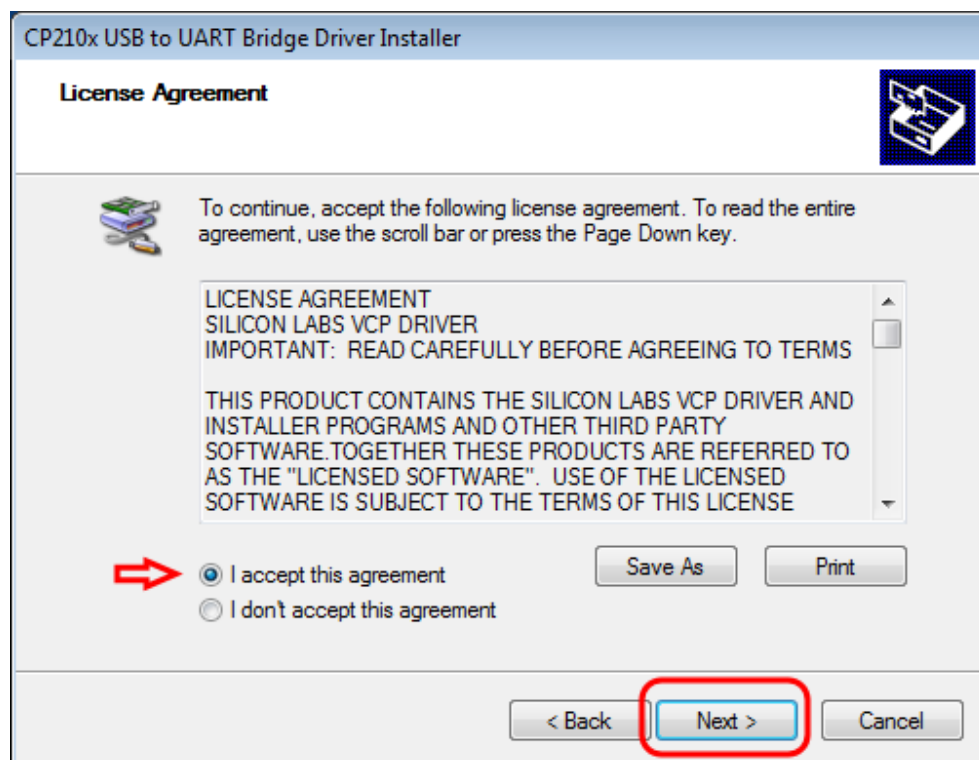
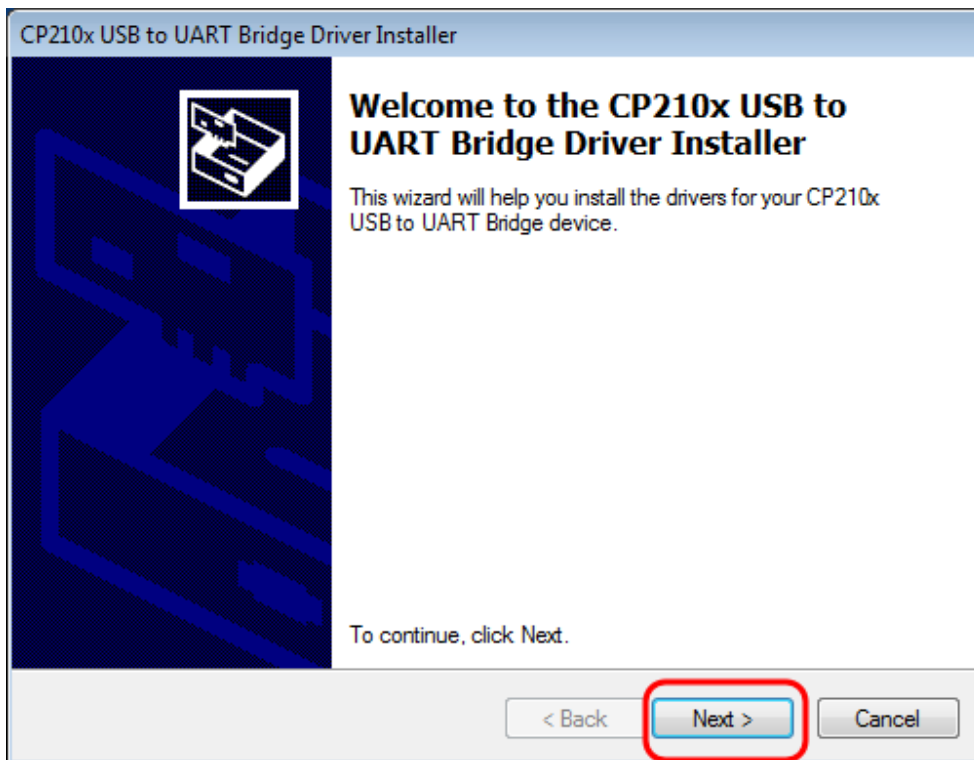
A second window opens.



Double click on **CP210xVCPInstaller\_x86.exe**.

The driver installer starts.

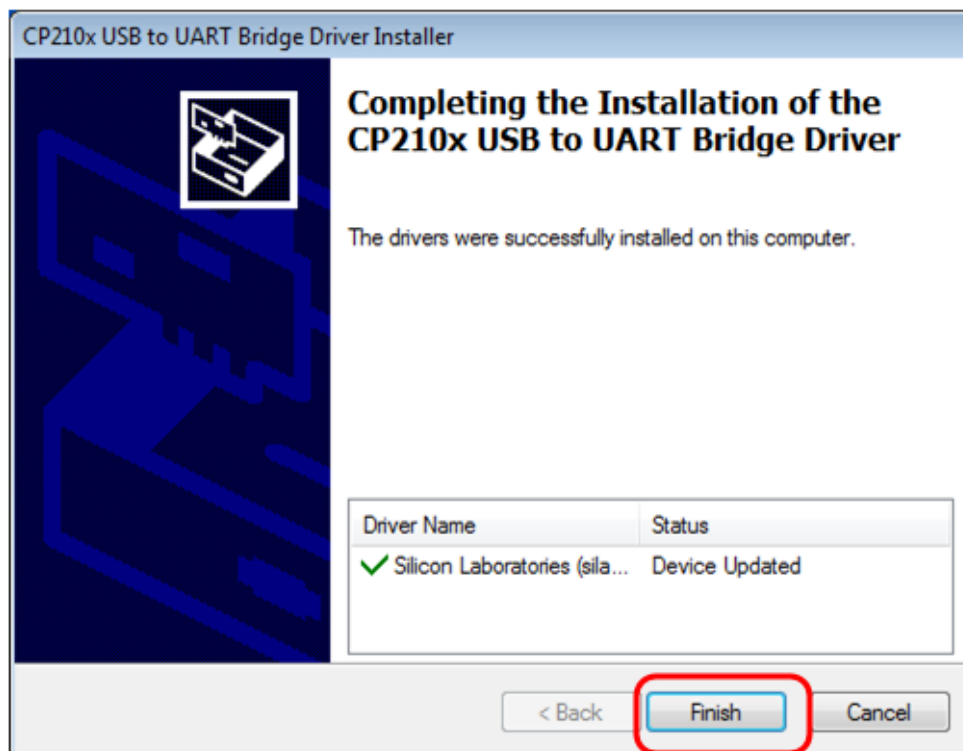
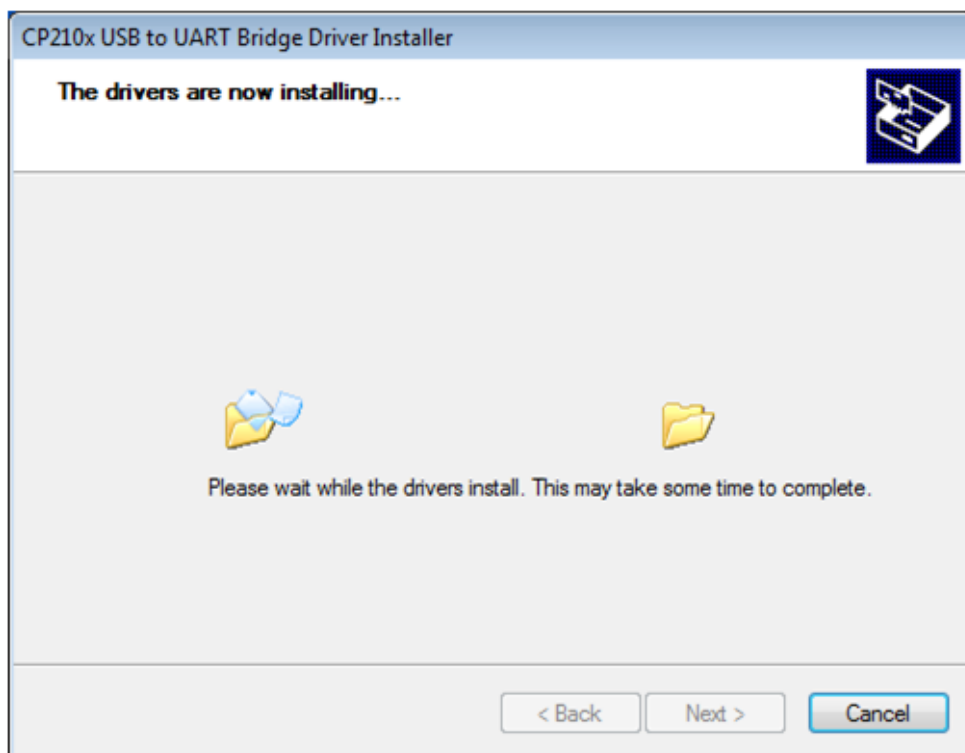
## S-904D Controller Installation Guide



Accept the license terms and press **Next** to continue.

## S-904D Controller Installation Guide

---

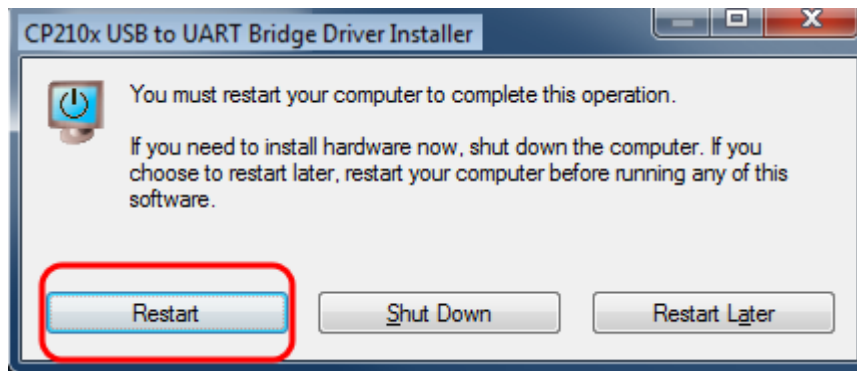


Press **Finish** to complete the installation.



## S-904D Controller Installation Guide

---



Press **Restart** to restart your PC, this will complete the installation.